



CSV-1474

USB 3.2 Gen1 to Dual HDMI™ Adapter Quick Installation Guide



Installing the Driver

NOTE:

DO NOT connect the adapter to the computer before completing the driver installation.

- The following strings and screenshots may vary slightly from each operating system, and the driver version is subject to change without notice.
-

Windows OS

1. Download the latest driver from the Club-3D website, www.club-3d.com. CSV-1474 (go to the download tab)
2. Click **Run Setup.exe** to start the installation.
3. Click **Finish** to complete the installation if prompted.

NOTE:

- a. If the **AutoPlay** does not start automatically, locate and doubleclick on the **Setup.exe** file in the driver folder to launch the setup.
- b. Enter the administrator password and click **Yes**, if a **User Account Control** dialog box is prompted.
- c. For some Windows Operating Systems, the driver will automatically be installed. If you need to install the driver manually, follow the instructions above.



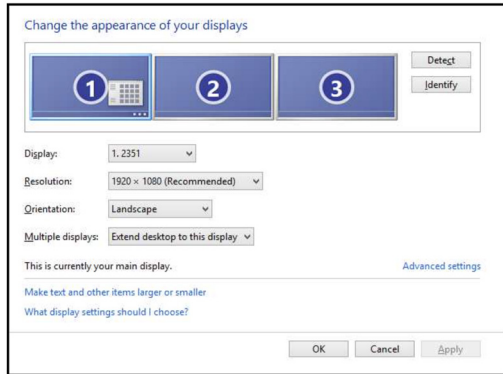
Connecting the Adapter


Connect the adapter to your monitor or computer after driver installation is completed.

Changing the Display Mode

Extra monitors can be connected through the adapter directly. Once the extra monitors are connected, they can be configured to use **Mirror mode**, **Extend mode** or set to be the **Primary display**.

Position the mouse anywhere on the Windows Desktop, right-click and select **Screen Resolution**.



Alternatively, click utility icon  in the Windows System Tray, and the Restart and select **DisplayLink Manager**

NOTE: Item **CSV-1474**, maximum single screen resolution is 3840*2160 at 60Hz.



CLUB 3D

USB 3.2 Gen1 to Dual DP Adapter Quick Installation Guide

For more support contact us at:

For driver updates please visit www.club-3d.com.

And for support please contact support@club-3d.com.

